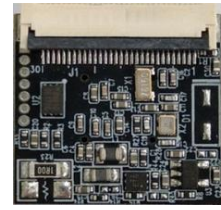
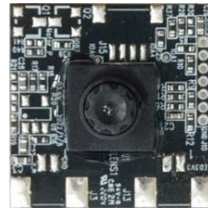
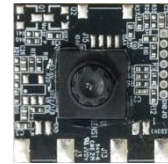


The module can recognize two gestures, scissors and paper. Devices can be switched by gesture without touching.



- Recognize two gestures, scissors and paper.
- Real-time edge decision-making without network connection.



### Contents:

- Gesture Recognition Module
- 2 IR LEDs

### Application

- Smart home appliances with touchless switch
- Intelligent power switch
- Interactive controls LED, audio, and motor
- Interactive toys

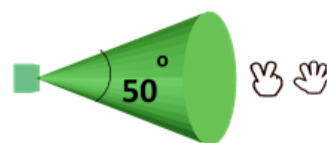
### Ratings / Specifications

#### Ratings

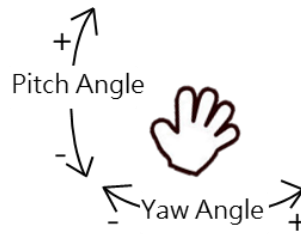
Item	Rated values
Supply voltage	3.3 VDC 5.0 VDC (Option)
Consumption current	<0.21 A
Operating temperature	0 to +50°C
Storage temperature	-30 to +70°C

#### Specifications

Angle of View	Angle
Horizontal detection range (angle of view)	50°
Vertical detection range (angle of view)	50°



Angle Range	Angle
Pitch angle (up-down)	$\pm 40^\circ$
Yaw angle (left-right)	$\pm 40^\circ$

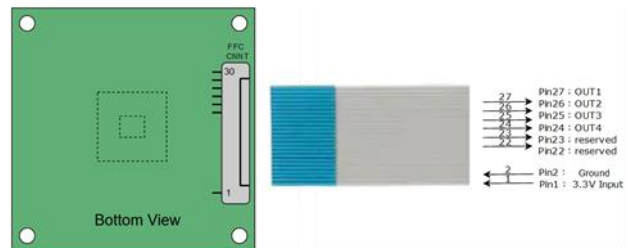


Host Communication Specifications	Specifications
Standard	GPIO

Detection Distance	40-100 CM
--------------------	-----------

## Connector Pin Assignment

Pin No.	Pin Name	Gesture Recognition
Pin1	3.3V	Power Supply
Pin2	Ground	Ground
Pin22	Reserved	-
Pin23	Reserved	-
Pin24	Out4	Gesture (paper)
Pin26	Out2	Gesture (scissors)



Note. Output level High (3.3V) active.

## Alternative Power Supply Input (Option)

Pin No.	Pin Name	Gesture Recognition
Pin1	5V	Power Supply
Pin4	Ground	Ground

