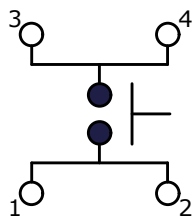
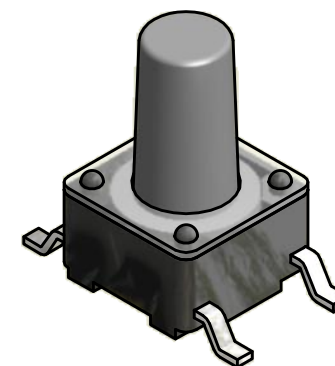
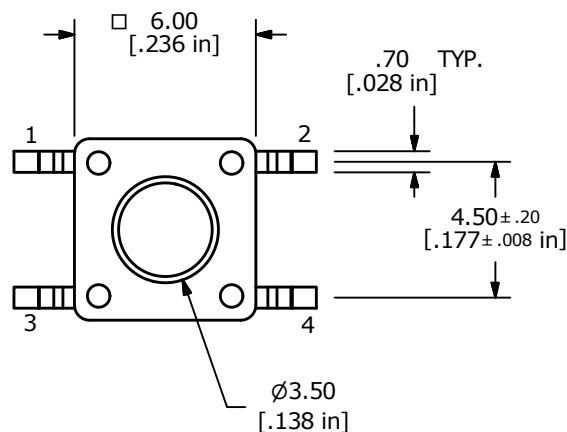
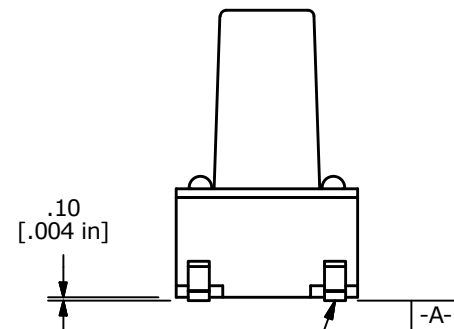
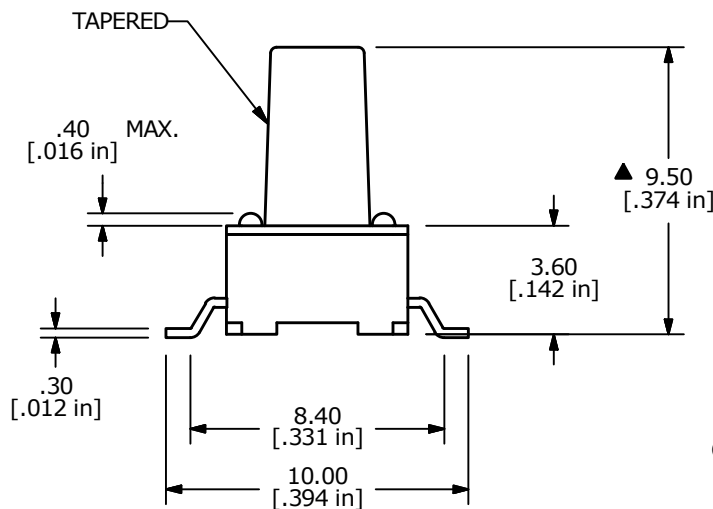


P.C.B. LAYOUT



CIRCUIT: SPST



NOTES:

1. ALL DIMENSIONS IN MM
2. GENERAL TOLERANCE: X.X = ±0.4  
X.XX = ±0.25
3. TERM. NOS. FOR REFERENCE ONLY.
4. RATING: 12VDC, 50mA
- ▲ 5. OPERATING FORCE: 260 ± 50 gms
6. TRAVEL: 0.25 ± .1mm
7. CONTACT RESISTANCE: 100 MILLI OHMS MAX. (INITIAL)
8. MECHANICAL/ELECTRICAL LIFE 100,000 CYCLES MIN.
9. CONTACT MATERIAL: SILVER
10. 2002/95/EC (ROHS) COMPLIANT
- ▲ 11. PACKAGING: 90/PCS TUBE
12. ▲ DENOTES CRITICAL PARAMETER



C	22478	update PCB detail and show 9.50 dim.	9/1/16	MW
B	16648	REVISED AND REDRAWN	11/13/06	TN
REV	PCR NO	DESCRIPTION	DATE	BY

TITLE TL3301BF260QG (TUBE)				
SCALE	DATE	DR	DWG	REV
4:1	11/13/2006	TN	P010534	C

THE INFORMATION CONTAINED IN THIS DOCUMENT IS PROPRIETARY TO E-SWITCH AND IS NOT TO BE COPIED OR TRANSFERRED